

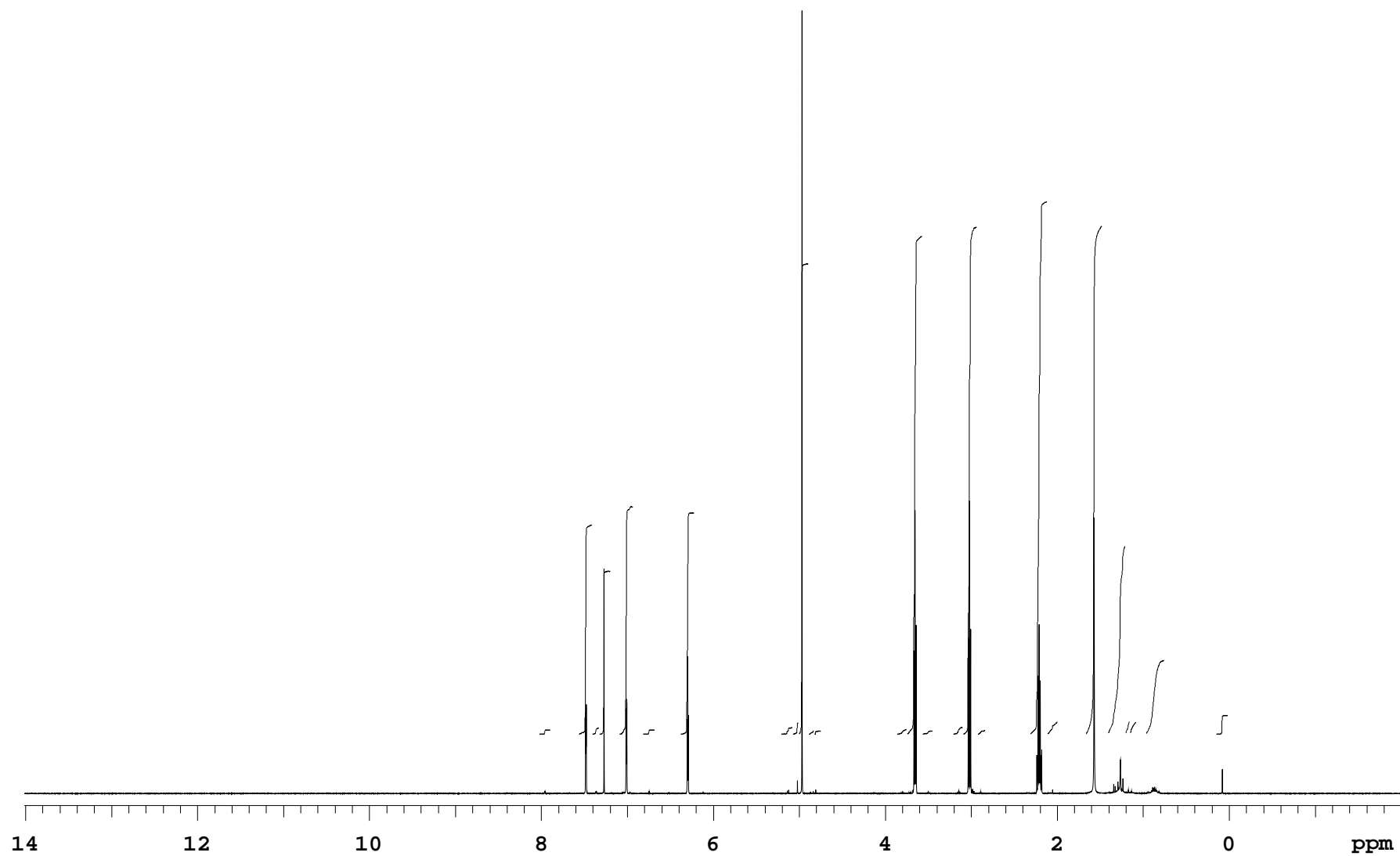
JH431-2d\_data\_new

Sample Name JH431-2d\_data\_new  
Date collected 2022-10-03

Pulse sequence PROTON  
Solvent cdcl3

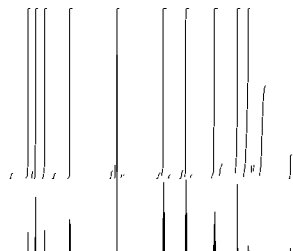
Temperature 25  
Spectrometer chpc-nmr500a-vnmrs500

Study owner jh2585  
Operator jh2585



## JH431-2d\_data\_new

Sample Name	JH431-2d_data_new	Pulse sequence	PROTON	Temperature	25	Study owner	jh2585
Date collected	2022-10-03	Solvent	cdcl3	Spectrometer	chpc-nmr500a-vnmrs500	Operator	jh2585



## INTEGRAL VALUES

Integral	start(ppm)	end	value
1	8.02615	7.89411	0.105
2	7.56352	7.41094	5.635
3	7.41094	7.3278	0.163
4	7.3278	7.19576	4.380
5	7.09111	6.93168	6.121
6	6.81627	6.68129	0.102
7	6.38005	6.21866	5.958
8	5.2044	5.07627	0.177
9	5.07529	5.00683	0.313
10	5.00683	4.89337	12.662
11	4.89239	4.82882	0.092
12	4.82784	4.74666	0.093
13	3.86345	3.74706	0.134
14	3.74608	3.56612	13.411
15	3.56221	3.44484	0.086
16	3.21108	3.09371	0.188
17	3.09273	2.93037	13.642
18	2.93037	2.83158	0.095
19	2.31124	2.11465	14.337
20	2.11367	1.99141	0.340
21	1.66571	1.47694	13.694
22	1.41043	1.20504	5.092
23	1.20406	1.15516	0.355
24	1.15418	1.07593	0.345
25	0.969321	0.75121	1.981
26	0.149692	0.0117835	0.499

## SAMPLE

date Oct 3 2022  
solvent cdcl3  
file /home/bath/vnmrsys  
/data/jh2585/JH431-2d\_da  
ta\_new\_20221003\_01/PROTO  
N\_06.fid

## PRESATURATION

satmode n  
wet n

## SPECIAL

temp 25.0  
gain 48  
spin 0  
hst 0.008  
pw90 7.900  
alfa 10.000

## ACQUISITION

sw 8012.8  
at 2.045  
np 32768  
fb 4000  
bs 32  
d1 1.000  
nt 8  
ct 8

## FLAGS

il n  
in n  
dp y  
hs nn

## TRANSMITTER

tn H1  
sfrq 500.059  
tof 500.1  
tpwr 61  
pw 3.950

## PROCESSING

fn not used

## DISPLAY

sp -1005.6  
wp 8012.3  
rfi 1006.0  
rfp 0  
rp 11.9  
lp 0

## DECOUPLER

dn C13  
dof 0  
dm nnn  
decwave W40\_OneNMR  
dpwr 39  
dmf 32258

## PLOT

wc 234  
sc 8  
vs 35  
th 44  
ai cdc ph

Plotname: PROTON\_06\_plot01

Data file /home/bath/vnmrsys/data/jh2585/JH431-2d\_data\_new\_20221003\_01/PROTON\_06.fid

Plot date 2022-10-03